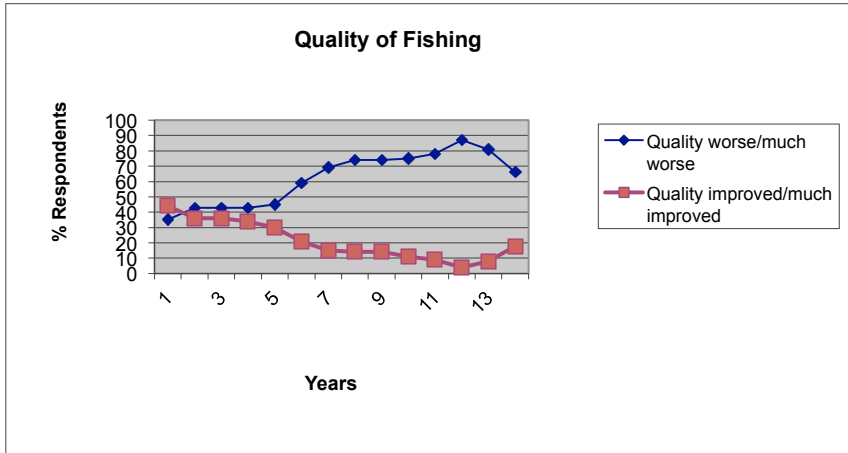
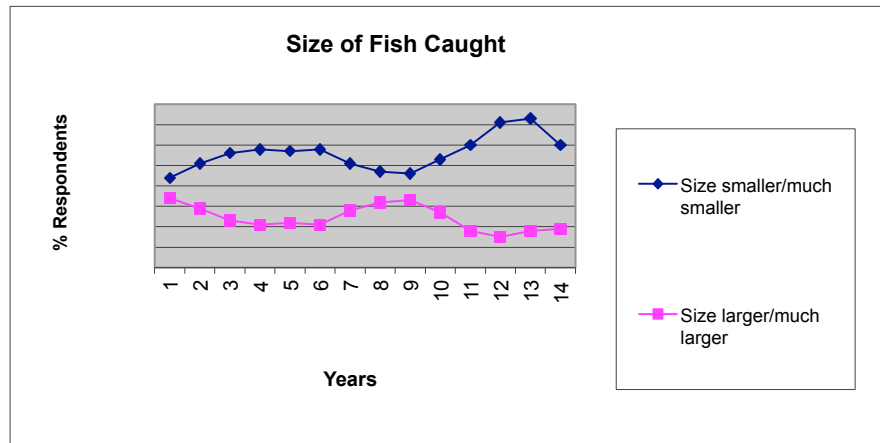


### Some Key Questions on Stripers Forever's Annual Survey

Questions	years															
<b>Quality of fishing In %</b>	2003	2004	2005	2006	2007	2008	2009	2010	2011	2012	2013	2014	2015	2016		
Quality worse/much worse	35	43	43	43	45	59	69	74	74	75	78	87	81	66		
Quality improved/much improved	44	36	36	34	30	21	15	14	14	11	9	4	8	18		
% of respondents																

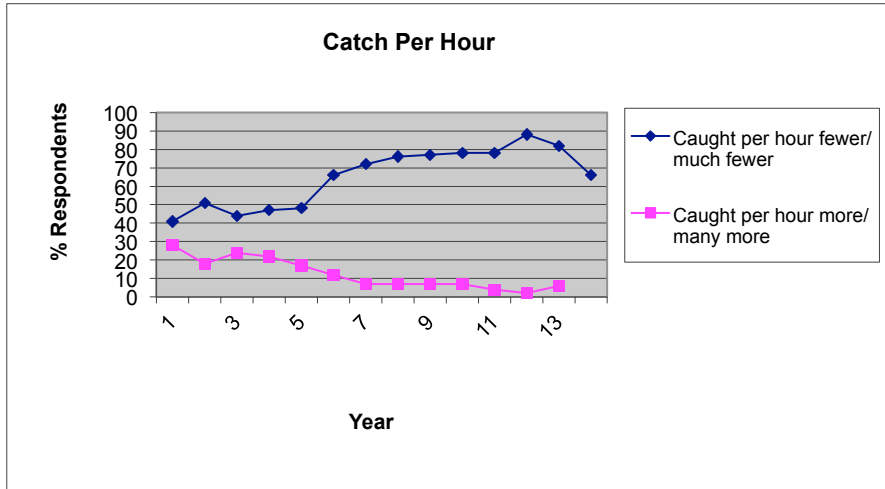


Size of stripers caught	2003	2004	2005	2006	2007	2008	2009	2010	2011	2012	2013	2014	2015	2016
Size smaller/much smaller	44	51	56	58	57	58	51	47	46	53	60	71	73	60
Size larger/much larger	34	29	23	21	22	21	28	32	33	27	18	15	18	19
% of respondents														



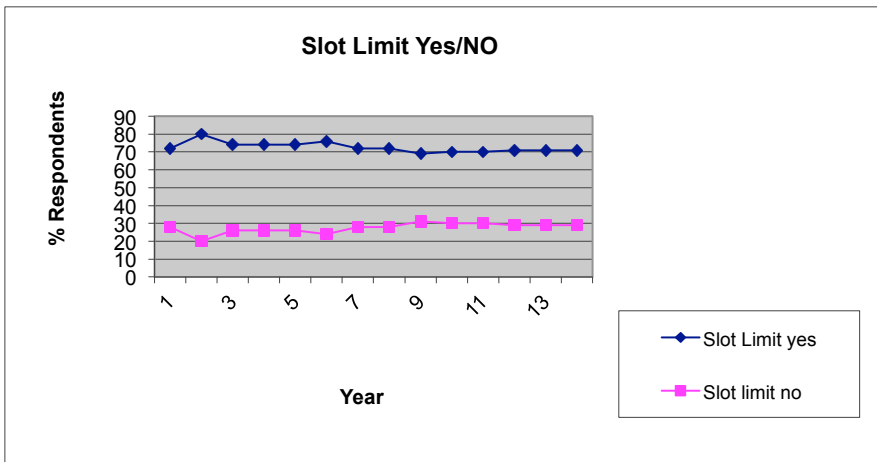
**Catch rate per hour**

	2003	2004	2005	2006	2007	2008	2009	2010	2011	2012	2013	2014	2015	2016
Caught per hour fewer/much fewer	41	51	44	47	48	66	72	76	77	78	78	88	82	66
Caught per hour more/many more	28	18	24	22	17	12	7	7	7	7	4	2	6	11
% of respondents														



**Favoring slot limit**

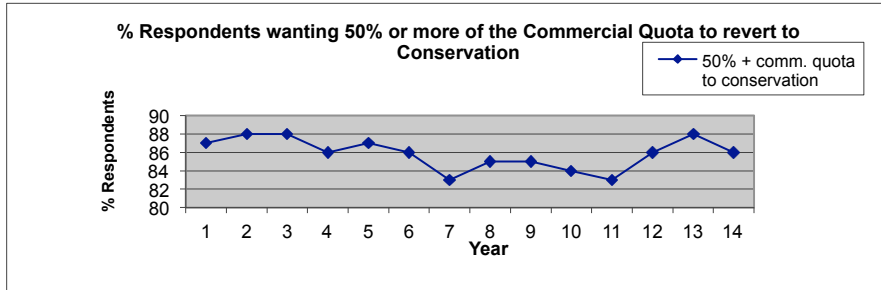
	2003	2004	2005	2006	2007	2008	2009	2010	2011	2012	2013	2014	2015	2016
Slot Limit yes	72	80	74	74	74	76	72	72	69	70	70	71	71	71
Slot limit no	28	20	26	26	26	24	28	28	31	30	30	29	29	29
% of respondents														



**Conservation of comml. Quota**

50% + comm. quota to conservation  
% of respondents

2003	2004	2005	2006	2007	2008	2009	2010	2011	2012	2013	2014	2015	2016
87	88	88	86	87	86	83	85	85	84	83	86	88	86



**Stamp for comml. Buyout**

In favor of stamp for comml. buyout  
% of respondents

2003	2004	2005	2006	2007	2008	2009	2010	2011	2012	2013	2014	2015	2016
75	77	77	80	74	76	69	72	70	78	79	72	75	77

