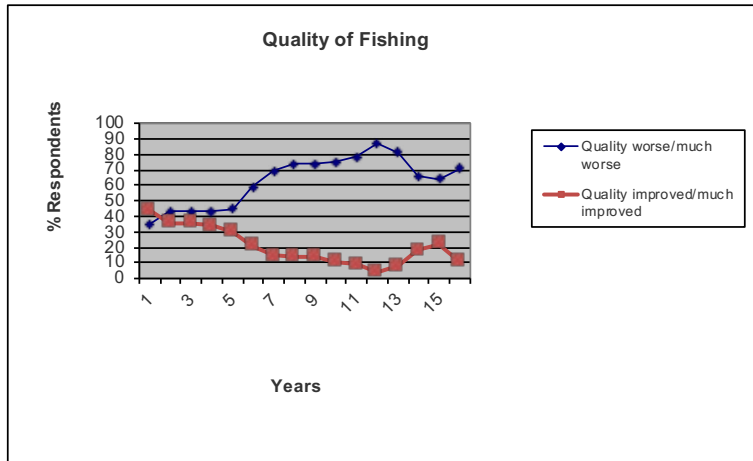


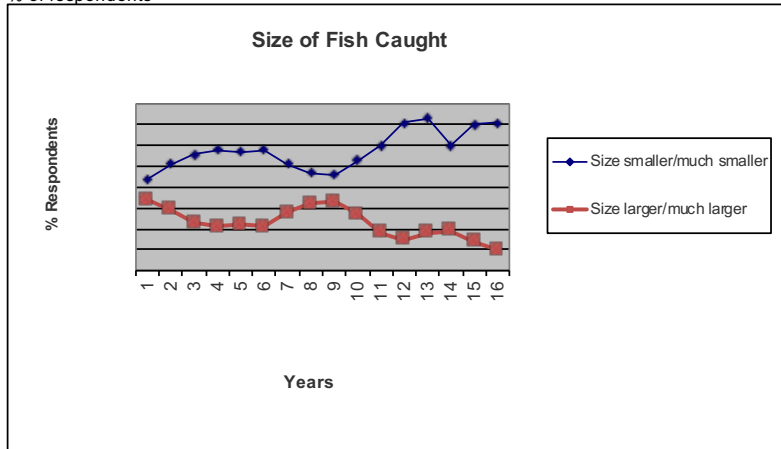
Some Key Questions on Stripers Forever's Annual Survey

Questions	years															
Quality of fishing In %	2003	2004	2005	2006	2007	2008	2009	2010	2011	2012	2013	2014	2015	2016	2017	2018
Quality worse/much worse	35	43	43	43	45	59	69	74	74	75	78	87	81	66	64	71
Quality improved/much improved	44	36	36	34	30	21	15	14	14	11	9	4	8	18	22	11



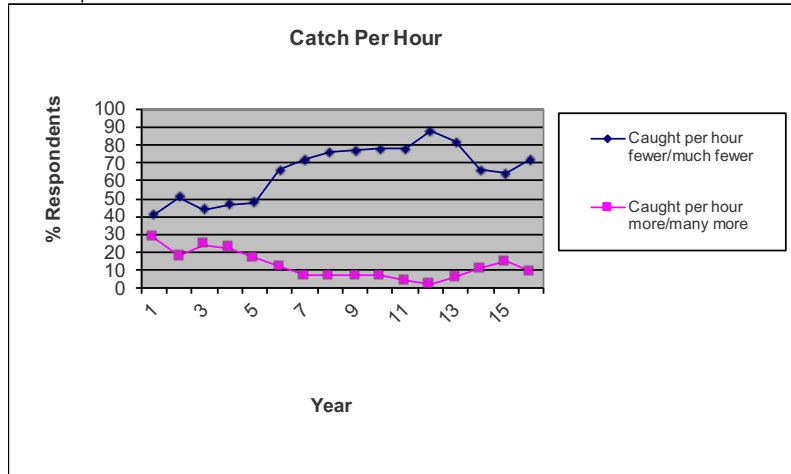
Note - a rising top line indicates that more people perceive the fishing as declining. A declining bottom line means less people feel that it is getting better.

Size of stripers caught	2003	2004	2005	2006	2007	2008	2009	2010	2011	2012	2013	2014	2015	2016	2017	2018
Size smaller/much smaller	44	51	56	58	57	58	51	47	46	53	60	71	73	60	70	71
Size larger/much larger	34	29	23	21	22	21	28	32	33	27	18	15	18	19	14	10



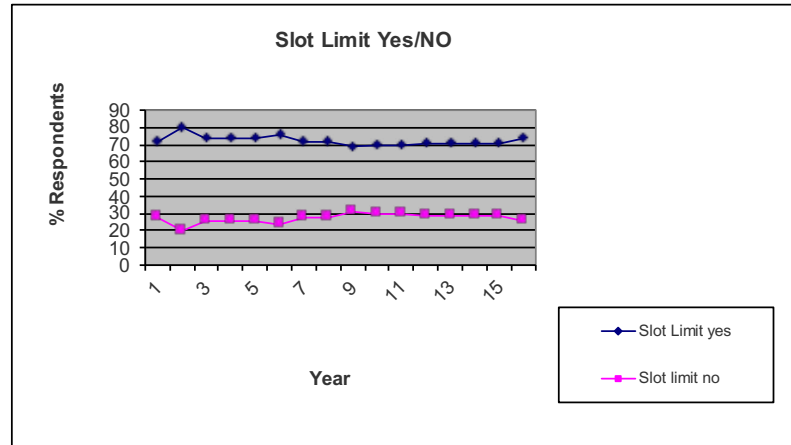
Note - rising top lines means more people are reporting that the fish they catch are larger. The declining bottom line means less people say they are catching more big fish.

Catch rate per hour	2003	2004	2005	2006	2007	2008	2009	2010	2011	2012	2013	2014	2015	2016	2017	2018
Caught per hour fewer/much fewer	41	51	44	47	48	66	72	76	77	78	78	88	82	66	64	72
Caught per hour more/many more	28	18	24	22	17	12	7	7	7	7	4	2	6	11	15	9
% of respondents																

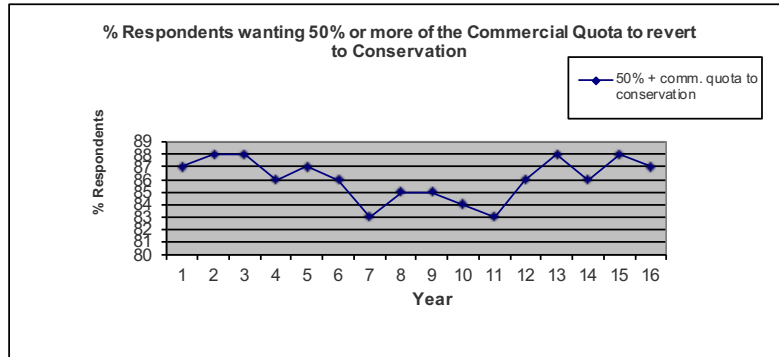


Note - rising top line means a higher percentage of anglers report catching less fish. The declining bottom line means people say they are catching less fish per hour on the water.

Favoring slot limit	2003	2004	2005	2006	2007	2008	2009	2010	2011	2012	2013	2014	2015	2016	2017	2018
Slot Limit yes	72	80	74	74	74	76	72	72	69	70	70	71	71	71	71	74
Slot limit no	28	20	26	26	26	24	28	28	31	30	30	29	29	29	29	26
% of respondents																



Conservation of comml. Quota	2003	2004	2005	2006	2007	2008	2009	2010	2011	2012	2013	2014	2015	2016	2017	2018
50% + comm. quota to conservation	87	88	88	86	87	86	83	85	85	84	83	86	88	86	88	87
% of respondents																



Stamp for comml. Buyout	2003	2004	2005	2006	2007	2008	2009	2010	2011	2012	2013	2014	2015	2016	2017	2018
In favor of stamp for comml. buyout	75	77	77	80	74	76	69	72	70	78	79	72	75	77	79	79
% of respondents																

